

Enzyme Lab

Testable Question/Purpose: How does _____?

Hypothesis: If _____ then _____ because

Review of Literature

Intro _____

Answer to background question 1

Conclusion _____

Materials:

-
-
-
-
-

Procedure:

- 1.
- 2.
- 3.
- 4.
- 5.
- 6.
- 7.

Results:

Can be stapled to paper or done on the computer

Title: _____

Temperature	Height of Jell-O (centimeter)			
(Celsius)	Before	After 24 Hrs.	Change in Height <i>Subtract your before height from your after height</i> (Before –After)	Class Average <i>Together we will take every groups change in height and calculate an average for each temperature</i>
30				
50				
70				
90				

Graph:

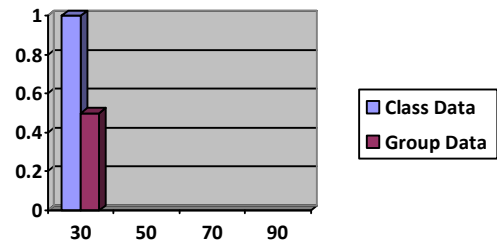
Can be stapled to paper or done on computer

Data Analysis:

The title of the graph is

The minimum and maximum values on the graph are

The graph shows



Conclusion:

The hypothesis of the experiment was, If _____ then _____ is/is not supported by the data.
